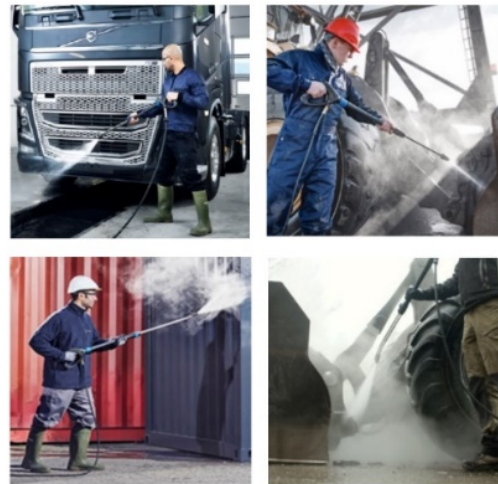


Jetstar

Mobile High Pressure Washer - Cold Water

Heavy duty for tough environments

This heavy-duty high pressure cleaner is fully mobile, with all components mounted on a sturdy steel base frame, protected by a steel impact protection cage. The high pressure pump is directly coupled to a standard speed electric motor. Operation of the machine is controlled from the “trigger” type safety spray lance. Typical areas of usage include cleaning applications in the construction and earth moving field, mining and heavy engineering industries, quarries and similar.



Key Features

- Sturdy steel chassis with roll cage for maximum component protection, as well as easy loading and off-loading.
- Two solid, large diameter heavy-duty wheels to facilitate convenient transportation, even in rough terrain.
- Positive displacement piston pump, oil lubricated with three ceramic pistons, suction and pressure valves with stainless seats.
- Direct drive power transmission between high pressure pump and electric motor.
- Four pole electric motor, revolving at a speed of 1450 rpm.
- Automatic pressure regulator with zero system pressure, including pump and high-pressure hose, during by-pass phases.
- Timer controlled “sleep function”, for the purpose of automatically de-activating the machine after 1* minute of by-passing with closed pistol (* adjustable setting from 0-10 minutes).
- Stainless steel water header tank with level control device.
- System shut-down facility (automatic activation) in the event of an insufficient water supply (low water cut-out).
- Glycerine filled pressure gauge.

WAP Pressure Washer Range



Standard Attachments

- Trigger type safety spray lance with 1 m long spray pipe and 25° fan jet nozzle.
- 10-meter-long flexible, metal-braided, rubber coated high pressure hose, with kink protection.
- “Geka” quick coupling for the water supply hose connection.



We offer
service and
repairs for your
machine



Technical Specifications



Description	Unit	Jetstar 21/200 E	Jetstar 18/160 E
Operating pressure	bar	200	160
Water volume	l/hour	1260	1080
Voltage	Hz	380/3/50*	380/3/50*
Electric Motor	kW	7.5	5.5
Electric Motor Speed	rpm	1450	1450
Dimensions	mm	920 x 730 x 990	920 x 730 x 990
Weight	kg	155	142
Feed temperature, max	°C	60	60

*525 volt versions are available on request

Specifications and details are subject to change without prior notice

