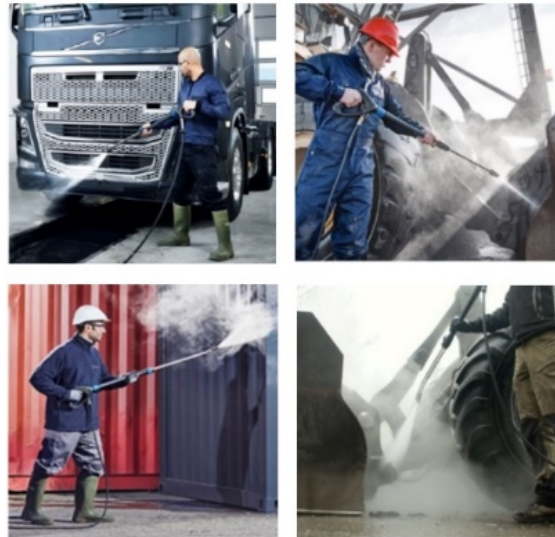


## Novastar

### Mobile High Pressure Washer – Cold Water

#### The benchmark in mobile pressure washers

This medium duty high pressure cleaner is fully mobile, with all components mounted on a sturdy steel base frame, protected by a steel impact protection cage. This machine is ideally suited to industries such as agriculture, building and construction, mining and heavy engineering.



## Key Features

- Sturdy steel chassis with roll cage for maximum component protection, as well as easy loading and offloading
- Two solid, large diameter heavy duty wheels to facilitate convenient transportation, even over rough terrain.
- Positive displacement piston pump, oil lubricated with three ceramic pistons, suction and pressure valves with stainless seats.
- Direct drive power transmission between high pressure pump and electric motor.
- Four pole electric motor, revolving at a speed of 1450rpm.
- Automatic unloader/regulator device with a pressure adjustment facility
- Chemical injector, venturi-type for “after-pump” injection of chemicals

# WAP Pressure Washer Range



## Standard Attachments

- Trigger type safety spray lance with 1m long spray pipe and 25° fan jet nozzle.
- 10-meter-long flexible, metal-braided, rubber coated high pressure hose, with kink protection.
- “Geka” quick coupling for the water supply hose connection.

We offer  
service and  
repairs for your  
machine



## Technical Specifications



Description	Unit	Novastar 14/130 EC	Novastar 14/150 E
Operating pressure	bar	125/115/85*	150
Water volume	l/hour	840	840
Voltage	Hz	220/1/50	380/3/50
Electric Motor	kW	3	4
Electric Motor Speed	rpm	1450	1450
Dimensions	mm	740 x 540 x 970	740 x 540 x 970
Weight	kg	85	83
Feed temperature max	°C	60	60

\*525 volt versions are available on request

Specifications and details are subject to change without prior notice.

